



Sara Navrady
Associate Architect

With Mecanoo since 2015

Professional qualifications Delft University of Technology, Master of Science in Architecture (honorable mention); Registered with the Bureau Architectenregister (NL)

Sara graduated from the Delft University of Technology in 2012. Prior to joining Mecanoo in 2015, she worked in multi-disciplinary offices in Calgary, Boston, London, Paris, Brisbane and Basel. Sara has broad international experience working across all scales from urban design to architectural and interior conception, detailing and execution. Sara's focus on overall strategy and communication with a keen attention to detail, brings strength to the design and project process by ensuring a refined and adaptable work flow and integrated collaboration with clients and consultants. Sara has considerable experience with managing international projects and leads Mecanoo teams on projects such as the Lawson Centre for Sustainability and Jacob's Pillow Doris Duke Theatre.

Selected projects



Jacob's Pillow Doris Duke Theatre, Becket, US

Size: 1,800 m²
Year: 2022 - ongoing



Velodrome and Sports Complex, Mondorf-les-Bains, Luxembourg

Size: 24,500 m²
Year: 2018 - 2027



European Investment Bank, Kirchberg, Luxembourg

Size: 62,000 m²
Year: 2014 - 2026



Lawson Centre for Sustainability, Toronto, Canada

Size: 14,450 m²
Year: 2019 - 2025



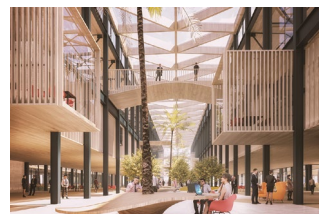
St. Lawrence Centre for the Arts, Toronto, Canada

Size: 16,750 m²
Year: 2022 - 2023



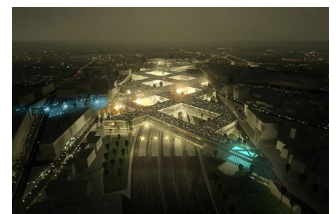
Nieuw Land National Park, NL

Size: 29,000 ha
Year: 2018 - 2019



Mixed-use office development, Boston, US

Size: 90,000 m²
Year: 2017



Rabat Agdal Train Station, Rabat, Morocco

Size: 176,600 m²
Year: 2013